

Cotton Insect Identification Guide



MISSISSIPPI STATE
UNIVERSITY
EXTENSION SERVICE

Photo Credits

4,5,7,8,9,10,11,13,14,15,16,17,23,24,25,27,28,29,32,33,34,35,36,38,39,42,47,51,52,53,54- Angus Catchot, Mississippi State University

2,3,6,12,18,19,21,22,26,30,31,40,41,43,44,45,46,50,55,56,57,58,59,60– Scott Stewart, The University of Tennessee

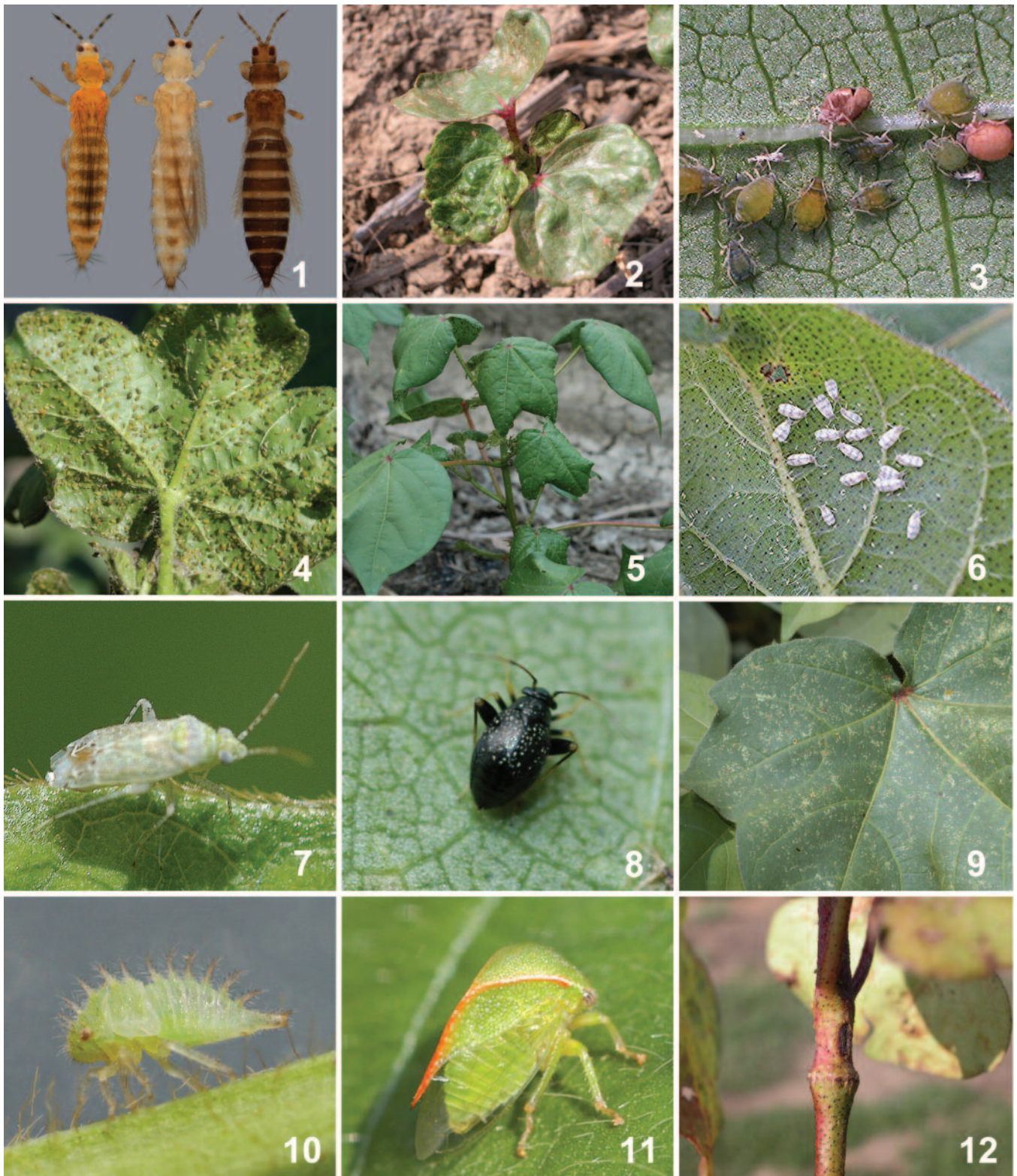
49- Blake Layton, Mississippi State University

1- Jack Reed, Mississippi State University

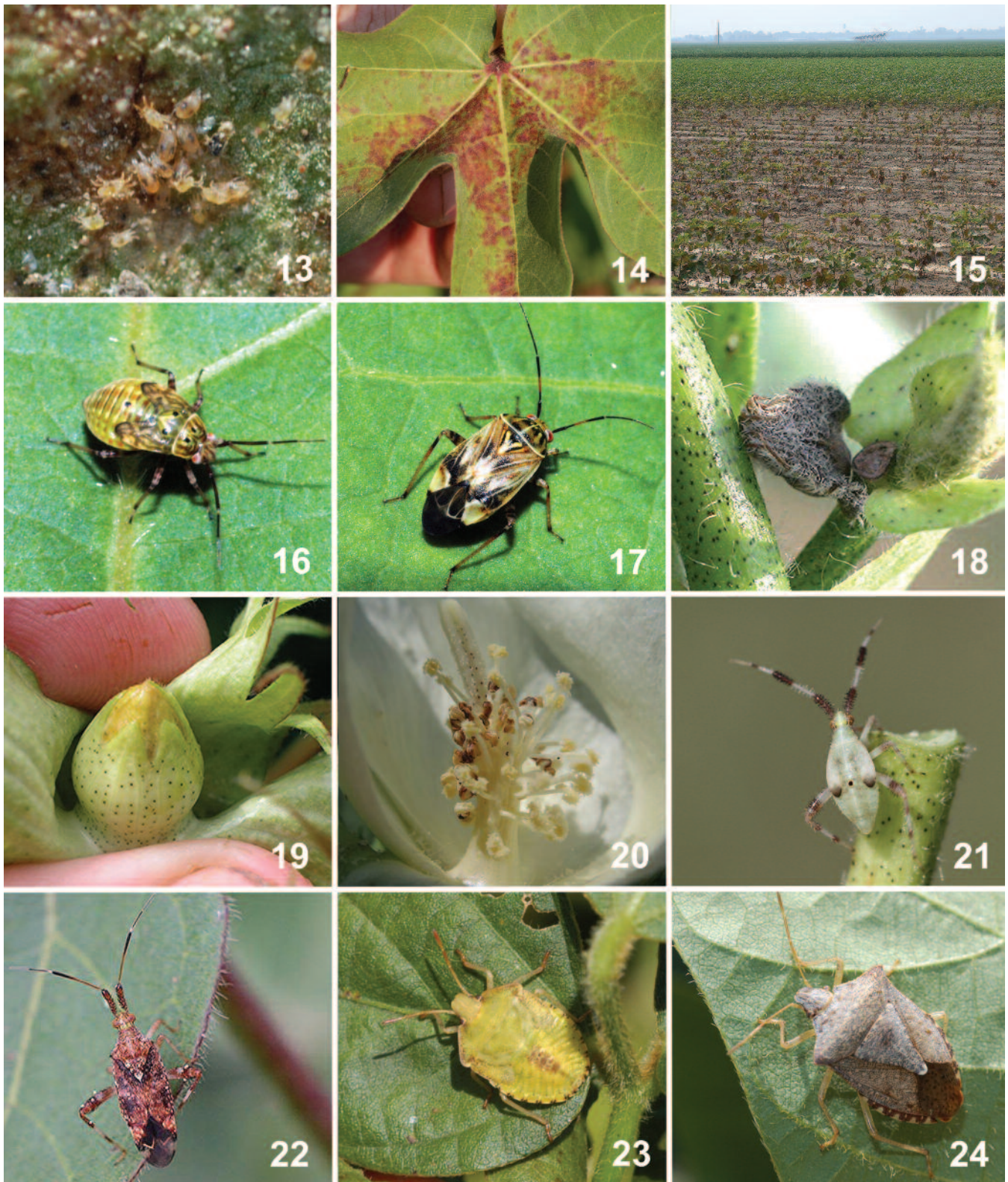
20- Scott Akin, University of Arkansas

37- Winfield Sterling, Texas A&M University

48- Ric Bessin, University of Kentucky Entomology



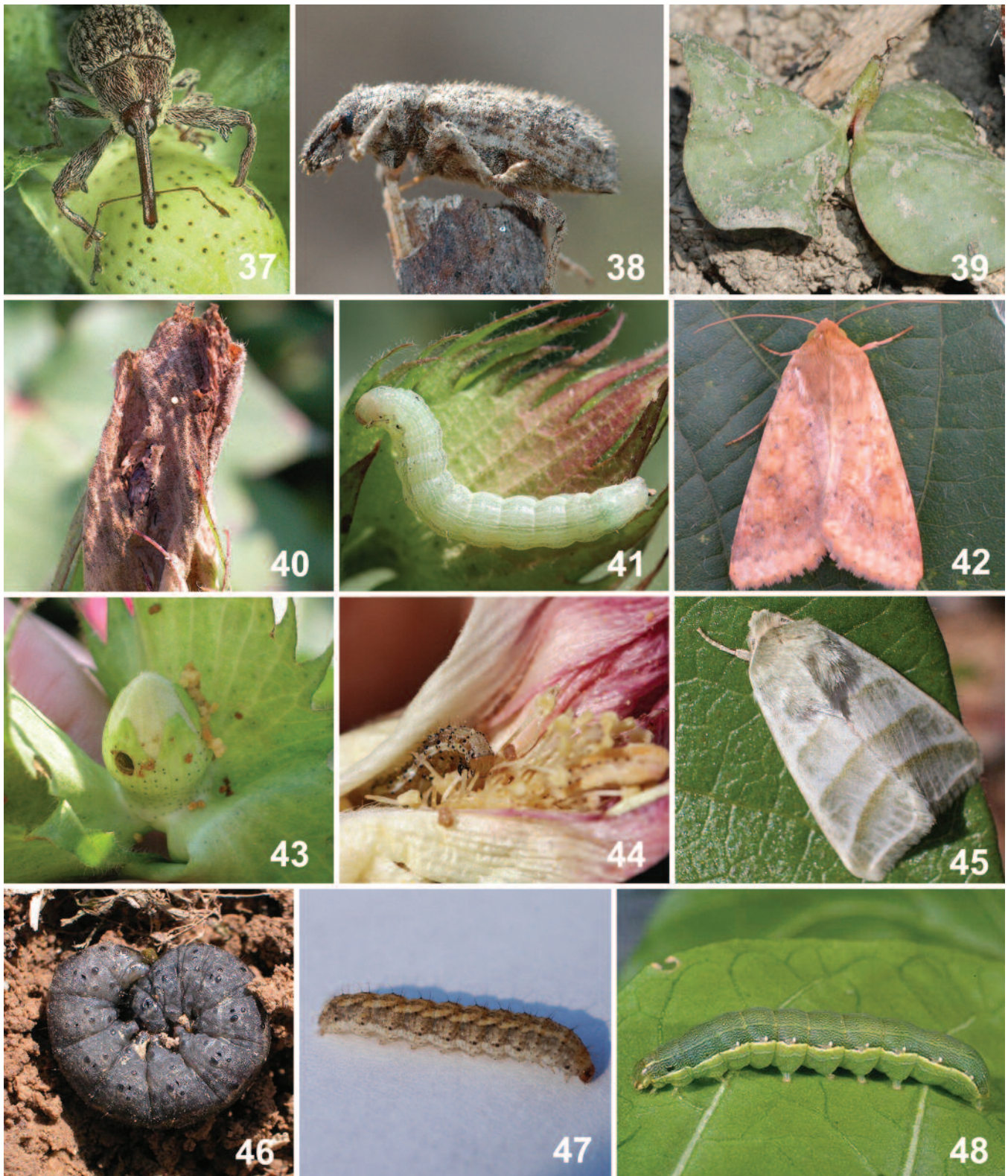
Figures 1-12. Eastern, Western, and Tobacco Thrips from left to right (1), Thrips Injury (2), Cotton Aphid (3), Cotton Aphid Infestation (4), Cotton Aphid Damage (5), Bandedwinged Whitefly (6), Cotton Fleahopper (7), Garden Fleahopper (8), Garden Fleahopper Damage (9), Threecornered Alfalfa Hopper Nymph (10), Threecornered Alfalfa Hopper Adult (11), Threecornered Alfalfa Hopper Damage(12).



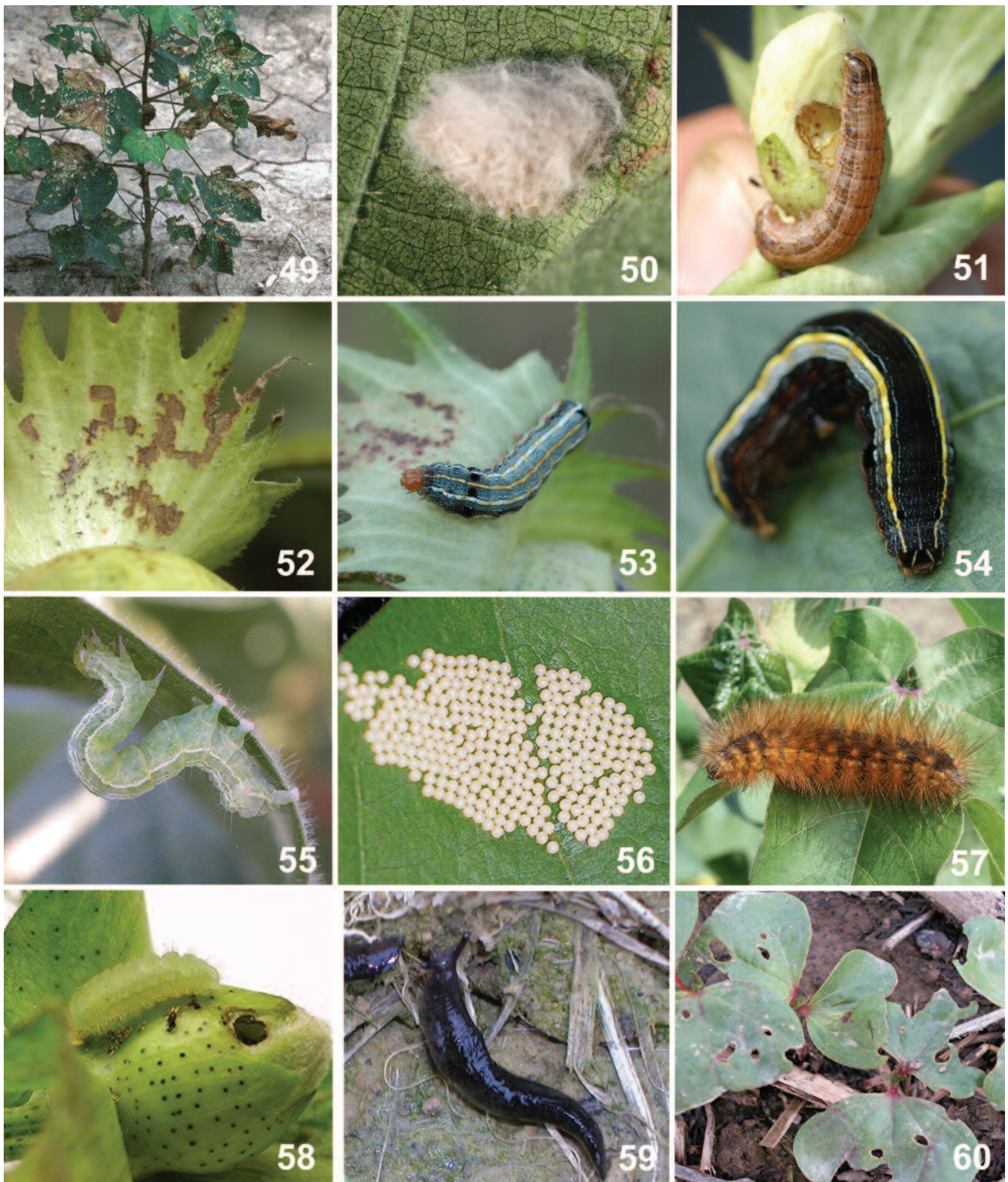
Figures 13-24. Twospotted Spider Mites (13), Twospotted Spider Mite Leaf Damage (14), Twospotted Spider Mite Severe Damage in Field (15), Tarnished Plant Bug Nymph (16), Tarnished Plant Bug Adult (17), Tarnished Plant Bug “Blasted Square” (18), Tarnished Plant Bug Dirty Square (19), Tarnished Plant Bug Dirty Bloom (20), Clouded Plant Bug Nymph (21), Clouded Plant Bug Adult (22), Brown Stink Bug Nymph (23), Brown Stink Bug Adult (24).



Figures 25-36. Green Stink Bug Nymph (25), Green Stink Bug Adult (26), Southern Green Stink Bug Nymph (27), Southern Green Stink Bug Adult (28), Stink Bug Egg Mass Hatching (29), Stink Bug External Boll Damage (30), Stink Bug Internal Boll Damage (31), Leaf Footed Bug (32), False Chinch Bug (33), False Chinch Bug Wilting Cotton Plant (34), Flea Beetle (35), Flea Beetle Damage (36).



Figures 37-48. Boll Weevil (37), Vegetable Weevil (38), Vegetable Weevil Damage (39), Bollworm Egg on Bloom Tag (40), Bollworm Larva (41), Bollworm Moth (42), Bollworm Damaged Square (43), Bollworm in Pink Bloom (44), Tobacco Budworm Moth (45), Black Cutworm Larva (46), Granulate Cutworm Larva (47), Beet Armyworm (48).



Figures 49-60. Beet Armyworm Damage (49), Armyworm Egg Mass (50), Fall Armyworm on Square (51), Fall Armyworm Bract Etching (52), Southern Armyworm Larva (53), Yellowstriped Armyworm Larva (54), Soybean Looper Larva (55), Saltmarsh Caterpillar Egg Mass (56), Saltmarsh Caterpillar Larva (57), Cotton Square Borer Larva (58), Slug (59), Slug Damage (60).



Copyright 2009 by Mississippi State University. All rights reserved. This publication may be copied and distributed without alteration for nonprofit educational purposes provided that credit is given to the Mississippi State University Extension Service.

Prepared by **Dr. Angus Catchot**, Associate Extension Professor, Entomology and Plant Pathology, Mississippi State University; **Dr. Scott D. Stewart**, Extension Entomology Professor, The University of Tennessee; **Joseph A. MacGown**, Research Technical/Science Illustrator, Mississippi State University; **Dr. Jeffery Gore**, Assistant Research Professor, Delta Research and Extension Center; **Dr. Donald R. Cook**, Assistant Research Professor, Delta Research and Extension Center; **Dr. Christopher Daves**, Assistant Extension Professor, Central Mississippi Research and Extension Center; **Dr. Gordon Andrews**, Extension Professor, Delta Research and Extension Center; **Dr. Fred Musser**, Assistant Professor, Entomology and Plant Pathology, Mississippi State University; **Dr. Scott Akin**, Assistant Professor Entomology, The University of Arkansas; **Dr. Gus Lorenz**, Extension Professor, Entomology, The University of Arkansas; **Dr. Rogers B. Leonard**, Professor of Entomology, Agcenter, Louisiana State University; **Dr. Ryan Jackson**, USDA-ARS Research Entomologist, Stoneville, Mississippi; **Dr. Clint Allen**, USDA-ARS Research Entomologist, Stoneville, Mississippi; **John Smith**, Extension Associate, Entomology and Plant Pathology, Mississippi State University; **Lucas N. Owen**, Research Assistant, Entomology and Plant Pathology, Mississippi State University; and **Dr. Darrin Dodds**, Assistant Extension Professor, Plant and Soil Sciences, Mississippi State University.

Discrimination based upon race, color, religion, sex, national origin, age, disability, or veteran's status is a violation of federal and state law and MSU policy and will not be tolerated. Discrimination based upon sexual orientation or group affiliation is a violation of MSU policy and will not be tolerated.

Publication 1640

Extension Service of Mississippi State University, cooperating with U.S. Department of Agriculture. Published in furtherance of Acts of Congress, May 8 and June 30, 1914. MELISSA J. MIXON, Interim Director (2500-12-09)